

LCC Modelling System

B 7N-00 O-16.5 small engine shed (1:43.5 scale)

**All drawings are not in scale.
Some proportions on drawings may differ from reality.**

For additional elements for modification and extension please visit our website at www.lcut.co.uk or email us at contact@lcut.co.uk

Length: 164mm Width: 103mm

Bundle contains:

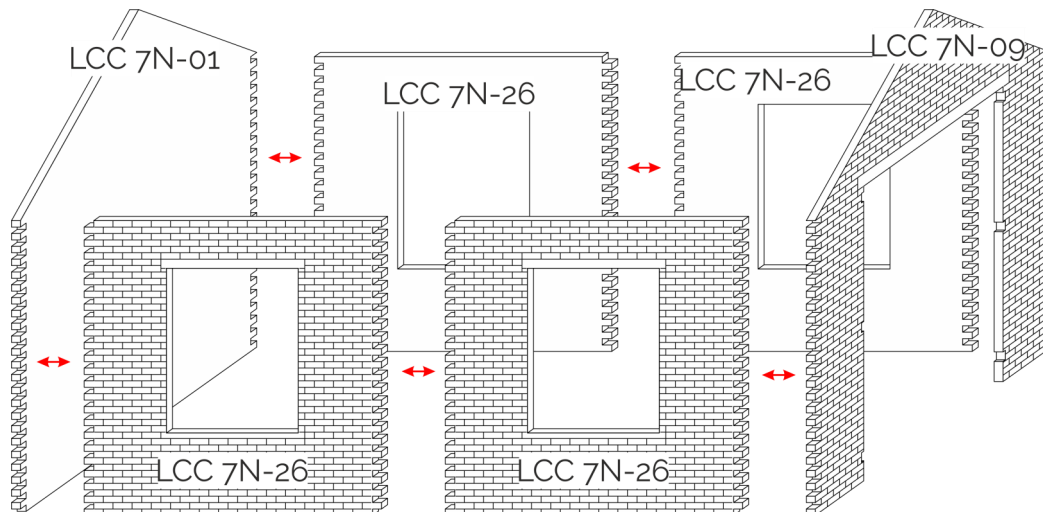
- 1x LCC 00-00
- 1x LCC 00-01
- 1x LCC 70-09
- 1x LCC 7N-01
- 2x LCC 7N-00B
- 3x LCC 7N-00T
- 2x LCC 7N-00R
- 1x LCC 7N-09
- 1x LCC 7N-09DL
- 1x LCC 7N-09DDR
- 4x LCC 7N-26
- 4x M 70-03c

We recommend PVA or any other paper/wood glue for the main fibre board parts and resin based glue for 3D printed parts if present.

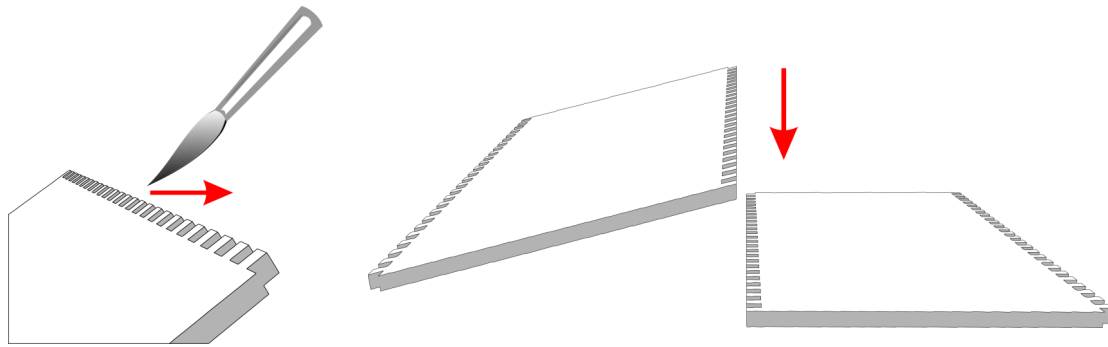
Painting recommendation: We recommend using acrylic or enamel paints. There is no need to undercoat the surface but it can be done if desired. The material used is porous and relatively forgiving, heavy coats are unlikely to flood the brickwork. If you experience any warping in the material leave it to fully dry and then gently bend it back into shape. Always test any paints in an area that will not be seen or on spare parts/off cuts.

For more information on how to paint LCUT creative models visit our website and the page titled "Painting guides".

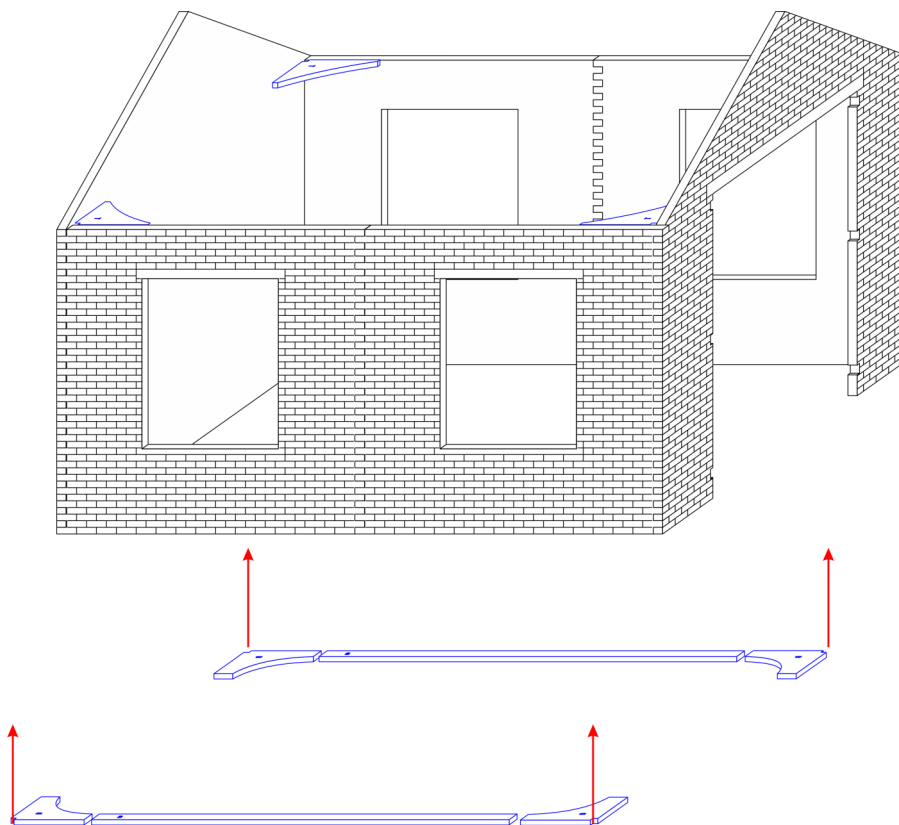
ASSEMBLING THE SHELL



Start the build by assembling the shell. Glue LCC 7N-26 into pairs and leave to dry. Then glue the ends to the side walls making sure they are at right angles. Use gentle force to make sure the corners and gaps in panels are as minimal as possible. Dry fit few times first to loosen the joint up if needed.



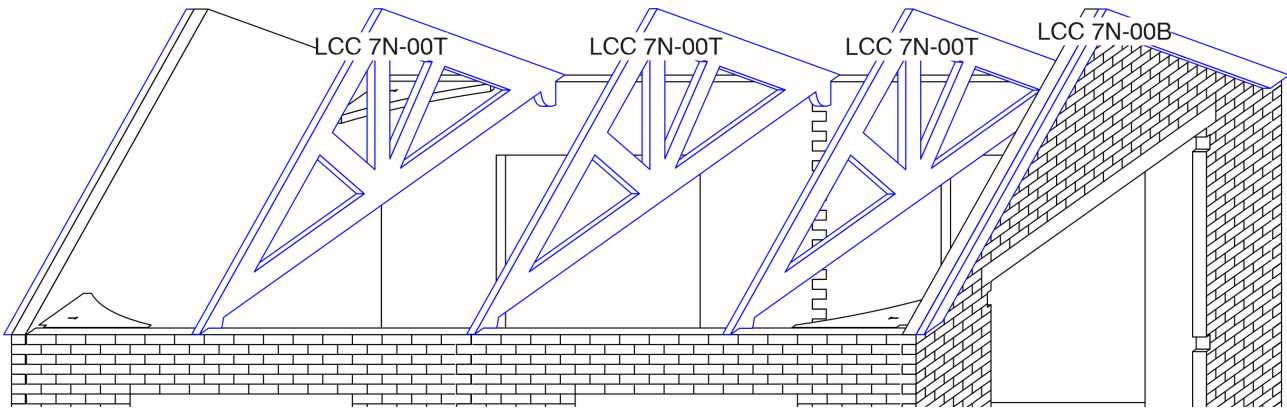
Recommended way of gluing parts together is to apply PVA glue to the interlocking bricks working from back of the part to the front. This ensures there will be no glue overflow on the front, visible side. Then lay the part without glue on flat surface laying on its front (engraved side). Press the part with glue onto the part without glue. Gently push parts together from sides to close the gap.



Optional step:

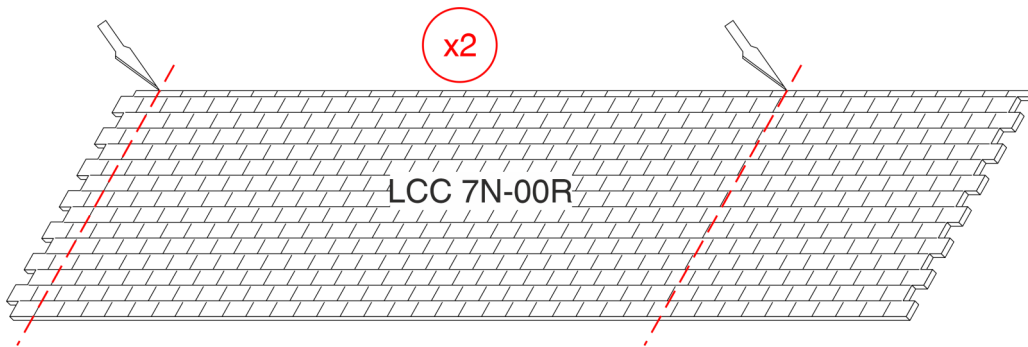
Use the triangular parts from LCC 00-00 to reinforce the corners. Note the "T" and "B" on the parts for correct orientation.

Use the thicker strips from LCC 00-01 to reinforce the wall.. Do not use any strips on the top edge as that will interfere with roof trusses.



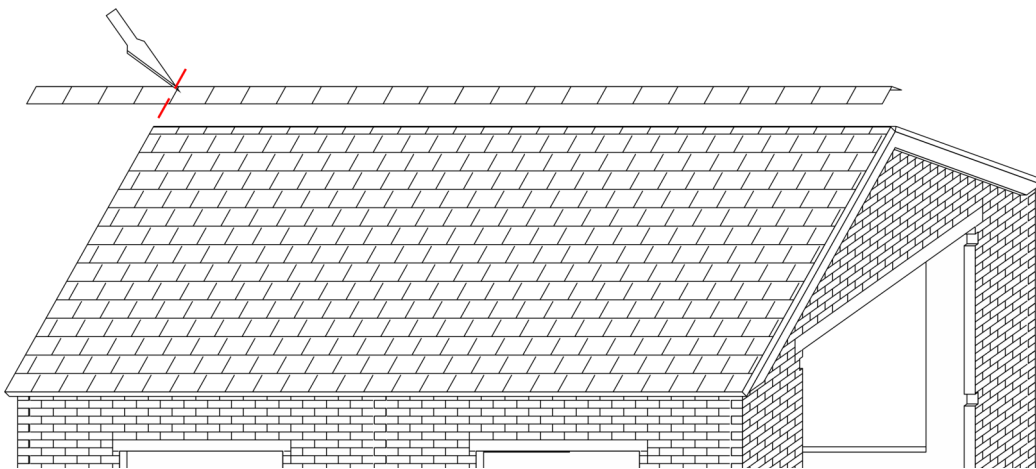
Glue the LCC 7N-00T across the building as shown in the picture. To make the process easier use quick drying glue such as superglue.

Glue the barge boards (LCC 7N-00B) flush with the top edges of the gate and end panels.



Measure the length of the building (taking measurement by the wall) and cut the roof panel to length. Measure twice cut once.

Glue the roof panels to the building making sure they are flush with the barge boards.



Glue the ridge tiles (LCC 74-09) to the ridge of the building. Cut the excess off.

Its better to assemble the shell and the roof and paint those separately from the windows and gates. It is possible to fully assemble the building and then paint it afterwards however if that is preferable.

Fold the gates in half, and glue, then glue the strapping on the side where it is market making sure it overlaps the engraved in strapping. The strapping on LCC 7N09DDRb has straps for the man sized doors. Those need to be cut away from the main part and then glued to the door. The man sized door is made to be opened and set in one position if that is desired.

The gates can be glued in with the strapping facing inside or outside.

The windows may require a little bit of fettling to fit well after painting. Care was taken to ensure good fit and batches are tested but some may slip though the cracks. If the window is too big for the opening take a shaving off the window equally from all sides. To take the shaving place a steel ruler over the window and using a fresh blade take a thinnest possible shaving. Repeat until the window fits.

